

# HEPTROC

## (Health economic evaluation of primary treatment for ovarian cancer)

Aparajita Bhattacharya<sup>1</sup>, Mousumi Dutta<sup>2</sup>, Zakir Husain<sup>3</sup>, Dionne Sequeira<sup>4</sup>, Manisha Karar<sup>1</sup>, Asima Mukhopadhyay<sup>1</sup>

Department of Gynaecological Oncology, Tata Medical Center, Kolkata<sup>1</sup>

Department of Economics, Presidency University, Kolkata<sup>2</sup>

Department of Social sciences, Indian Institute of Technology, Kharagpur, West Bengal<sup>3</sup>

Department of Social services, Tata Medical Center, Kolkata<sup>4</sup>

Corresponding author: [asima.mukhopadhyay@tmckolkata.com](mailto:asima.mukhopadhyay@tmckolkata.com)

### BACKGROUND

- Ovarian cancer is the third most common form of women cancer in India.
- Clinical management of ovarian cancer is costly

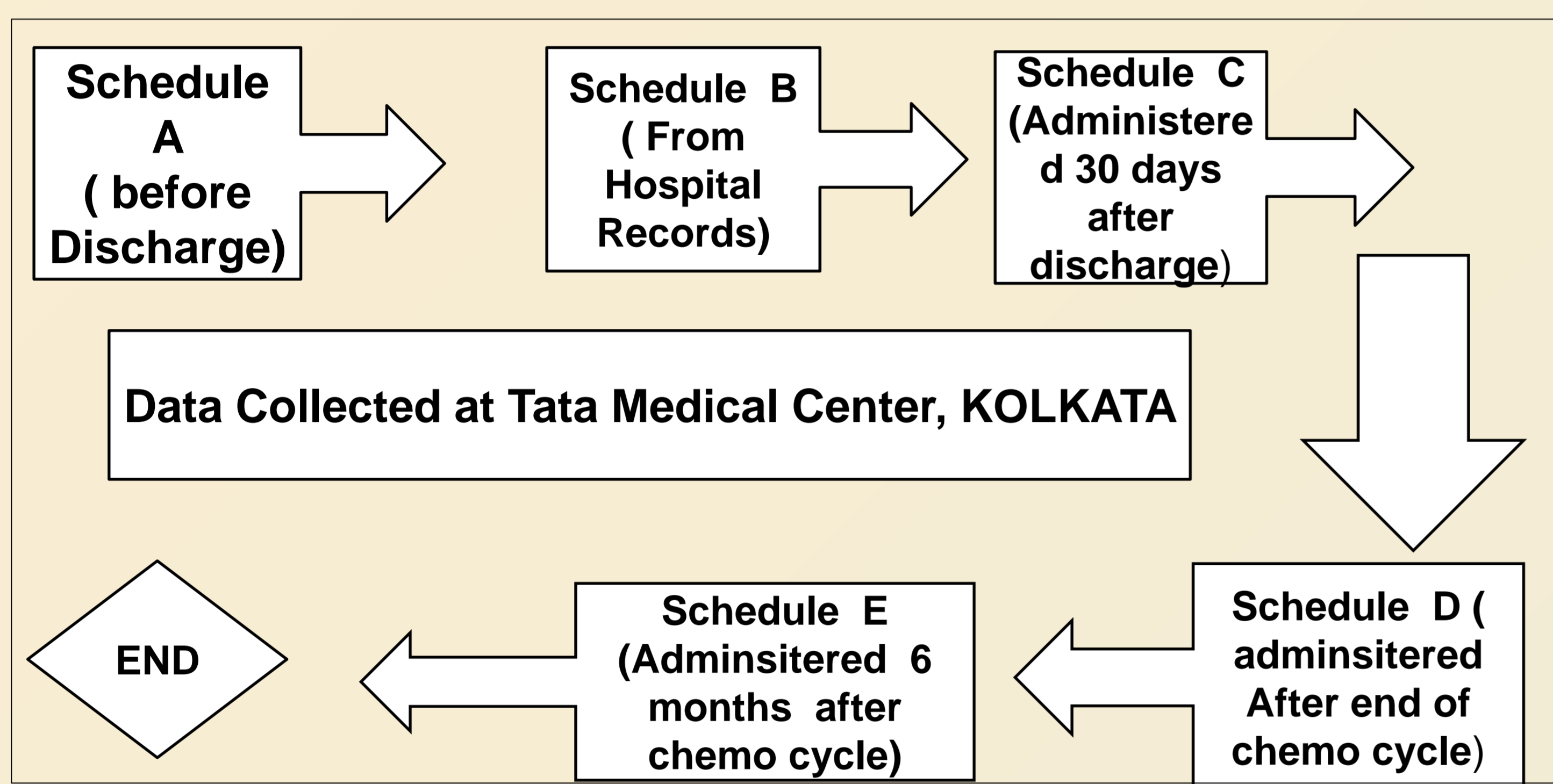
### OBJECTIVES

- ❖ Total costs of treatment- direct hospital costs and opportunity costs
- ❖ Changes in asset holding of the family

### METHODS

- Its an exploratory, prospective observational, single centre, cost analysis study.
- The study conducted at the Tata Medical Center Kolkata.
- Participants - Patients who have undergone primary treatment for ovarian cancer (surgery +/- chemotherapy) at this center will be included.

#### Data collection graph



### INCLUSION AND EXCLUSION CRITERIA

#### Inclusion

- Undergoing frontline surgical treatment for ovarian cancer (primary debulking surgery or interval debulking surgery).
- Also includes patients undergoing completion surgery for ovarian cancer at TMC, Kolkata (included under primary debulking surgery).

#### Exclusion

- Recurrence/ secondary cytoreduction cases
- Consent not obtained.
- Getting treatment for another cancer
- Palliative surgery/ emergency procedures

### CONCLUSION

- Opportunity cost was very high at the time of hospital discharge
- Asset holding was affected , but due to funding support we were able to stop huge loss of asset
- We have found that the second line treatment cost for primary debulking surgery patients are much lower than the Interval debulking surgery patients.

### RESULTS

For this study (n=142)

#### Schedule A –

- Prior to Tata Medical Center average expenditure Rs 76956.01
- In Tata Medical Center average expenditure Rs 99934.82

#### Schedule B –

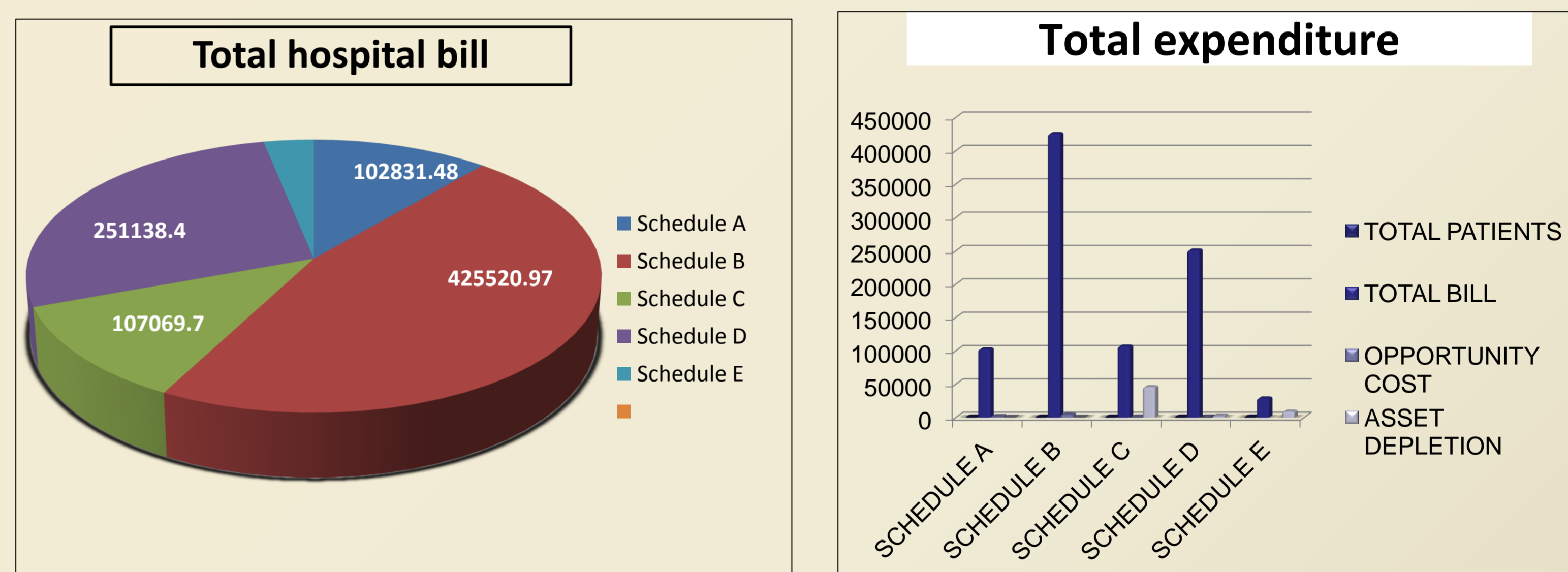
Average Surgery Cost per patient is Rs 425520.97

**Schedule C –** (n= 129) Average Expenditure Incurred 30 Days from Surgery Rs 107069.7

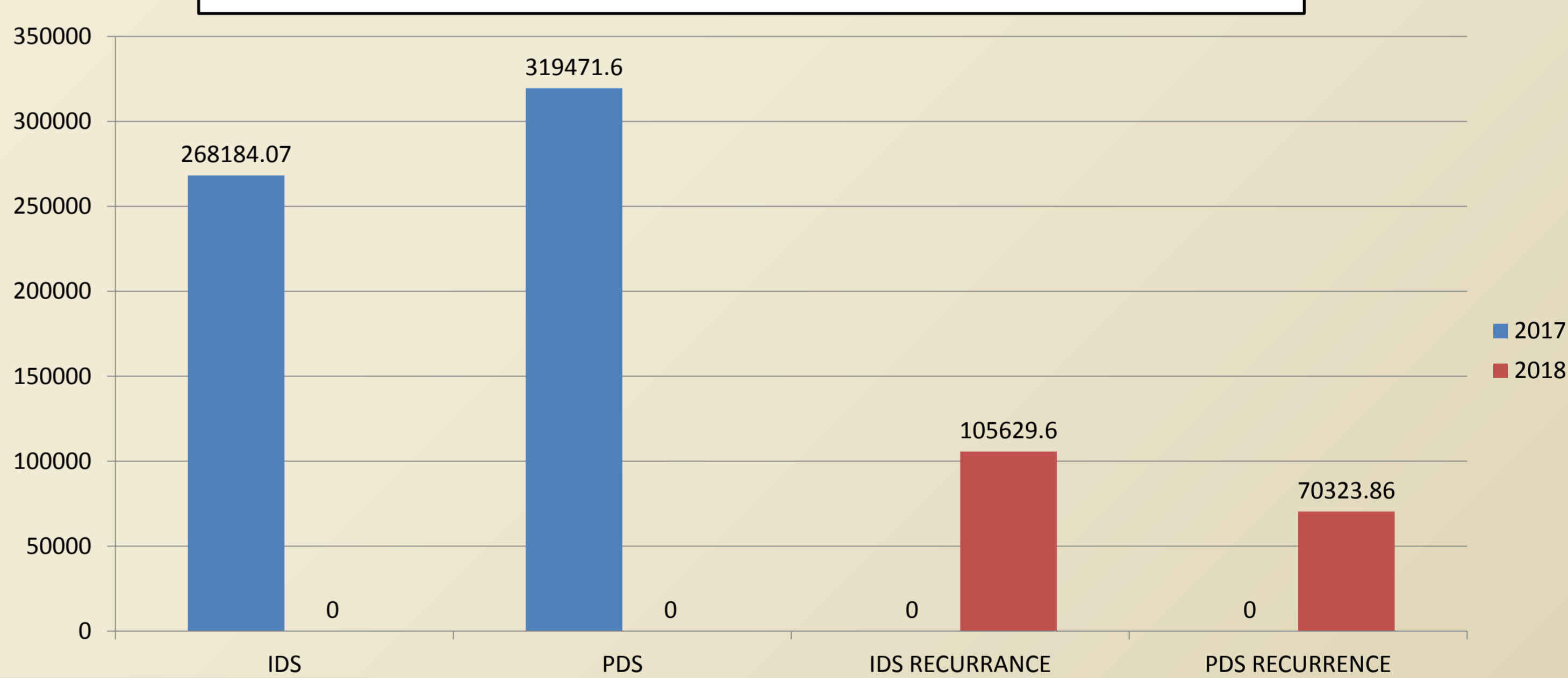
#### Schedule D –

(n=92) Average Expenditure Incurred for Chemo Therapy Rs 251138.4

**Schedule E –** (n= 73) Average expenditure Incurred post chemo therapy for 6 month Rs 29147.92



### RECURRENCE COST 2018



### ACKNOWLEDGEMENT



Papiya Mukherjee & Shreyasee Datta for Data Entry

