

# Impact of Early Involvement of Integrated Palliative Care Services in Gynecological Cancers (Experience from Tata Medical Center ,Kolkata)

Srikant Aterya, Supriya Mondal, Barnali Ghosh, Aparajita Bhattacharya, Jaydip Bhaumik, Asima Mukhopadhyay



## BACKGROUND

✓Tata Medical Center, Kolkata is a major tertiary referral center for gynecological cancers in Eastern India. All advanced cancer even if treated initially with a curative intend should be referred early to palliative care to reduce symptoms, improve quality of life & smoothen the journey.

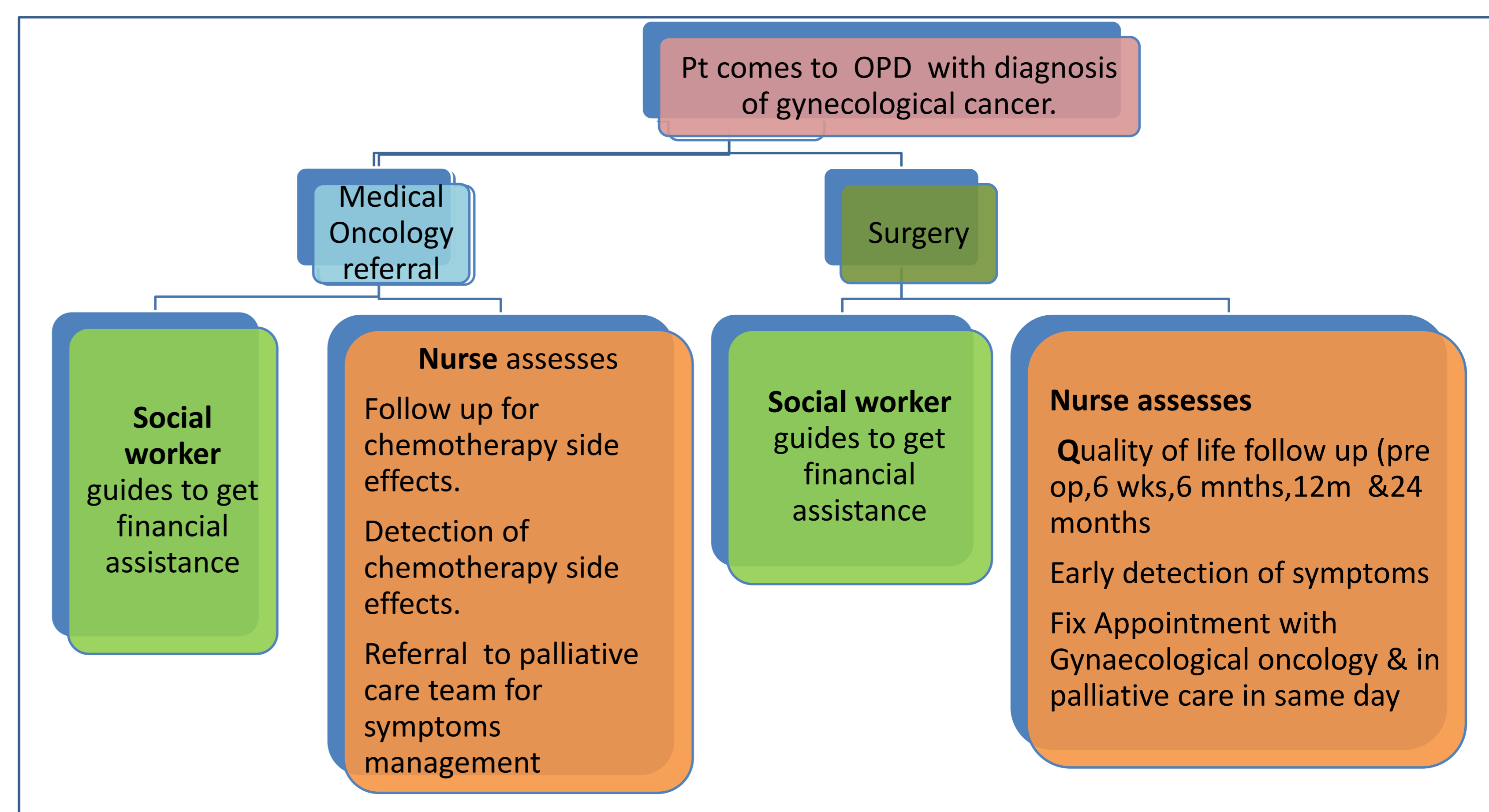
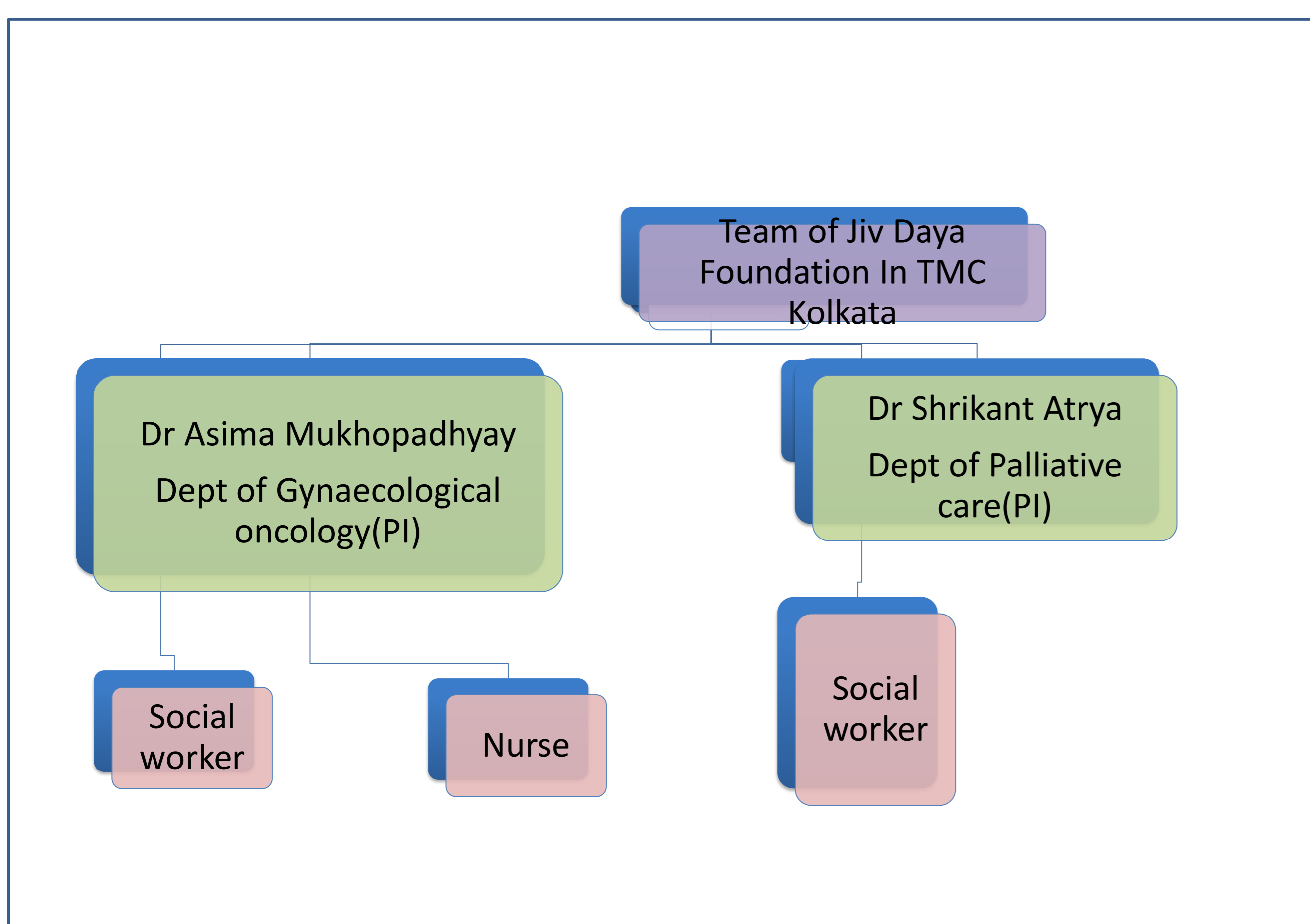
## AIMS

- ❑Routine involvement of palliative care team in the early post-operative period and follow up visits in gynaecological malignancies
- ❑Early diagnosis of symptoms & referral for symptom management.
- ❑Early referral to clinicians to investigate for recurrent disease
- ❑Improve patient satisfaction and quality of life

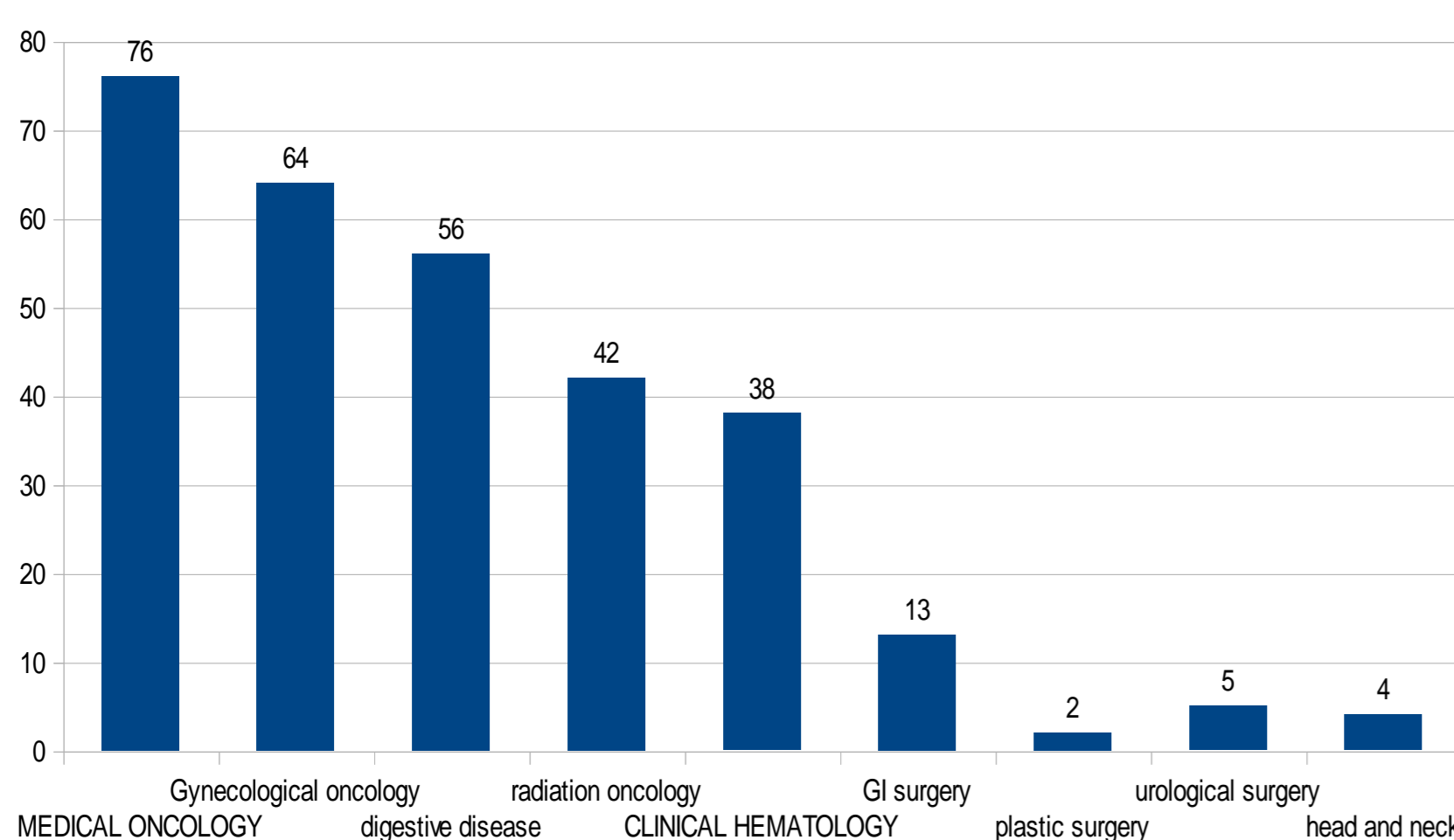
## METHODS

- All patient (March 2016 to till date) having surgery for gynecological malignancies or receiving NACT prior to interval surgery are referred to the palliative team in addition to patients in advanced stages.
- The team from Jiv Daya Foundation, USA acts as an important role in this integration.

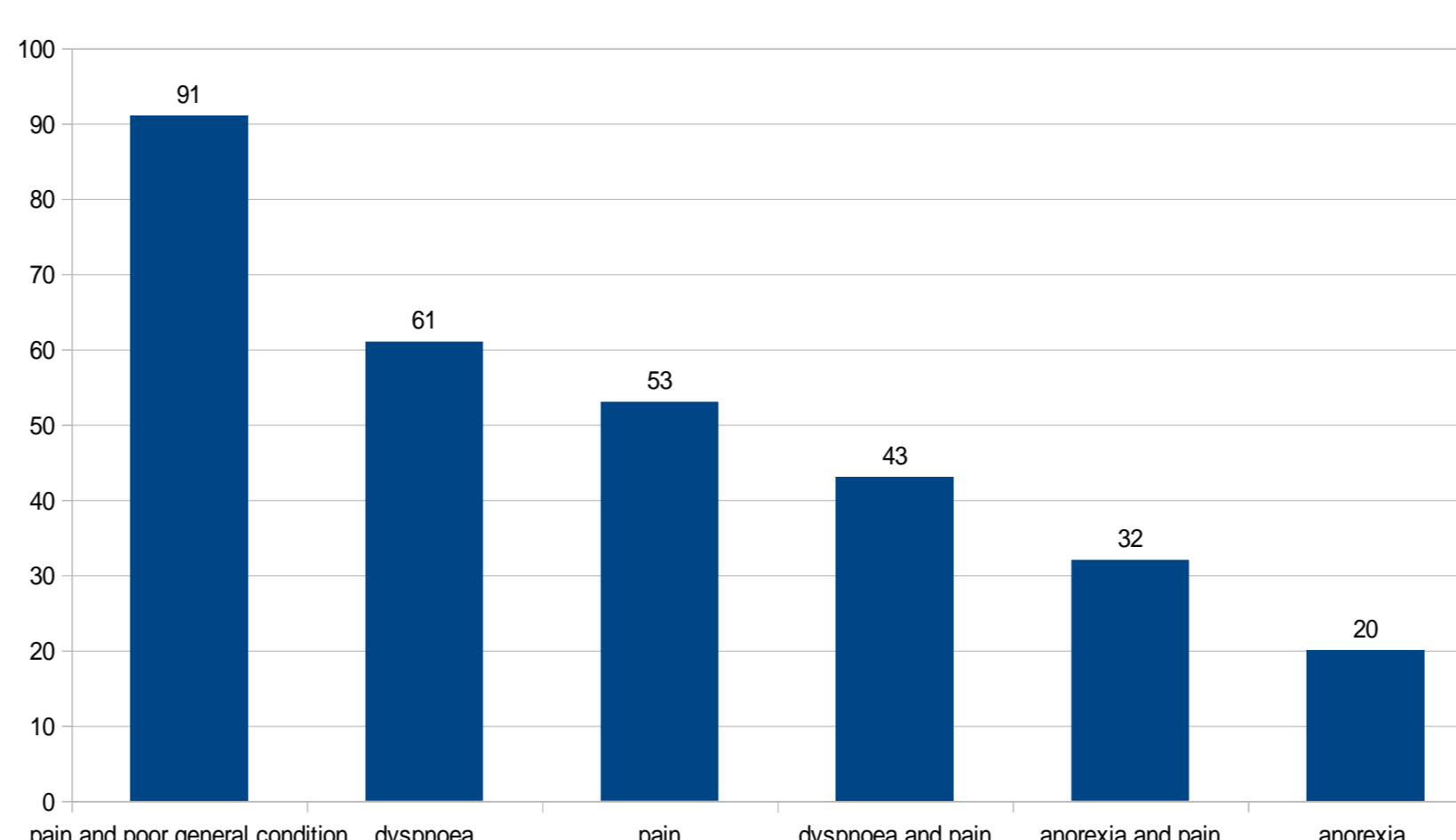
### Integration between Gynaecological Oncology and Palliative care in TMC Kolkata



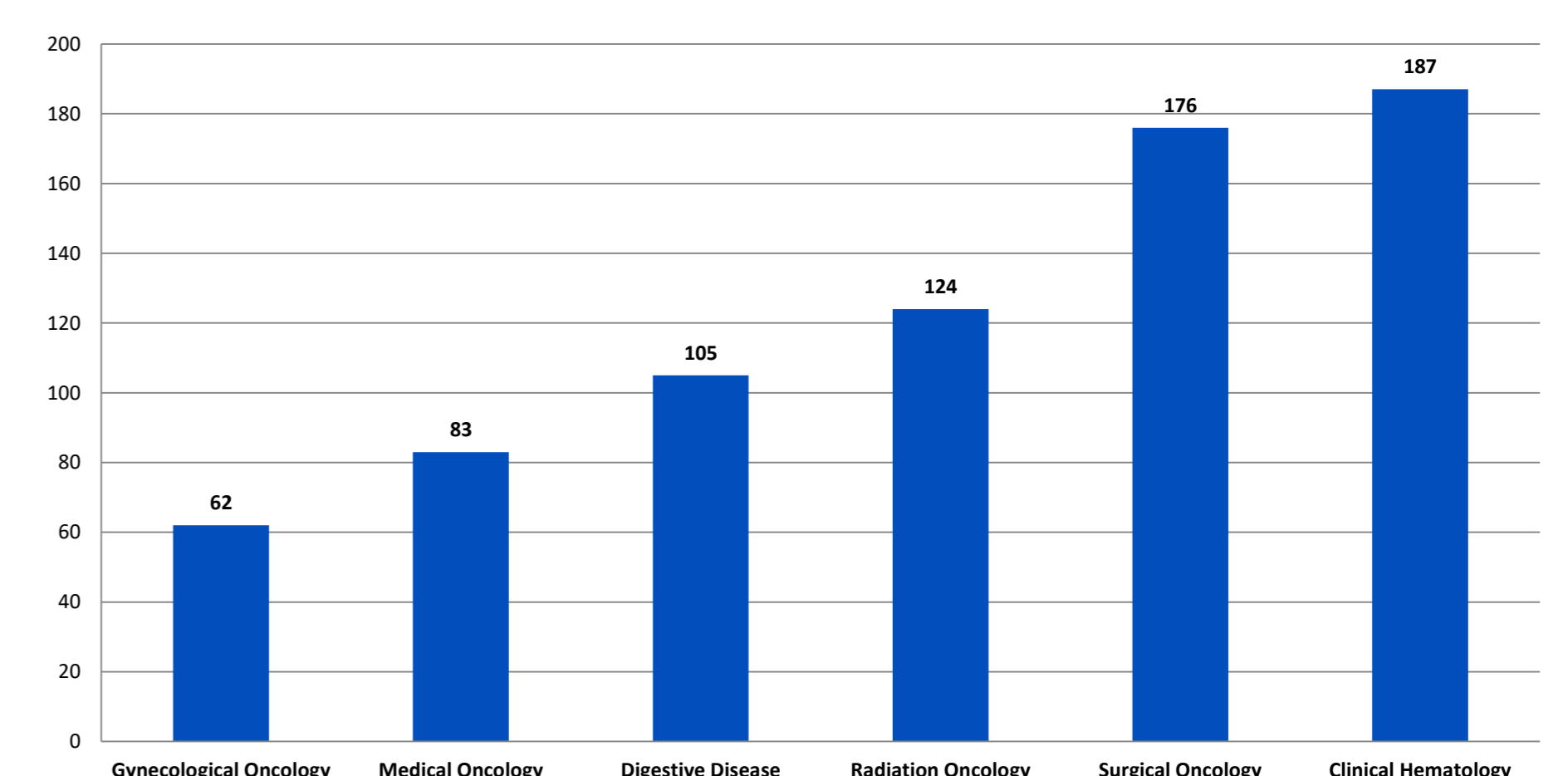
**Pattern of referral to palliative care**



**Reasons for referral to palliative care**



**Median time delay (in Days) in referring to palliative care**



## CONCLUSION

- ✓Due to integration of gynecological oncology team & Palliative care team, the medical delay time in referring to the palliative care team is least compared to other departments in TMC Kolkata.
- ✓It has helped in symptoms management & detection of early recurrence.
- ✓It has improved patient satisfaction.

## ACKNOWLEDGEMENT

Jiv Daya Foundation of USA, Sr Hanife MacGamwell, Gynecological oncology ,TMC Kolkata. Dept of Palliative care ,TMC Kolkata Dept. of Medical Oncology ,TMC Kolkata